

# Shasta

COACHMEN

2025 SHASTA COMPACT & i-5 TRAVEL TRAILERS

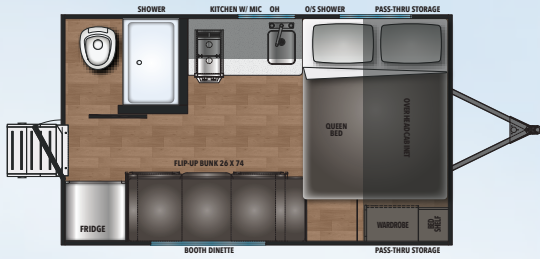


**COMPACT**

AFFORDABLE QUALITY... RICH HERITAGE – SINCE 1941

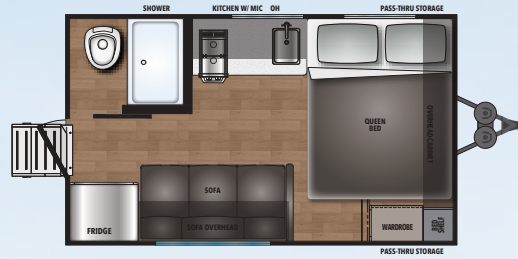
**i-5**  
EDITION

## COMPACT FLOORPLANS



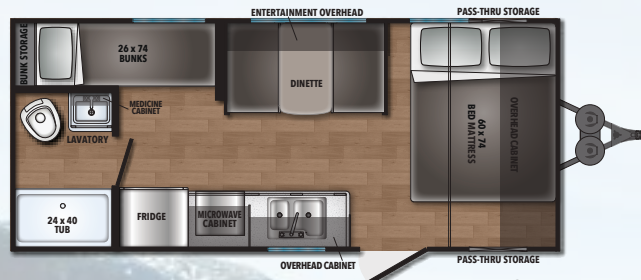
**16BH**

LENGTH 16'9" | HEIGHT 10'4" | UVW 3,079 | GVWR 4,000  
HITCH WEIGHT 349 | TANKS: FRESH 39, BLACK 30, GREY 30



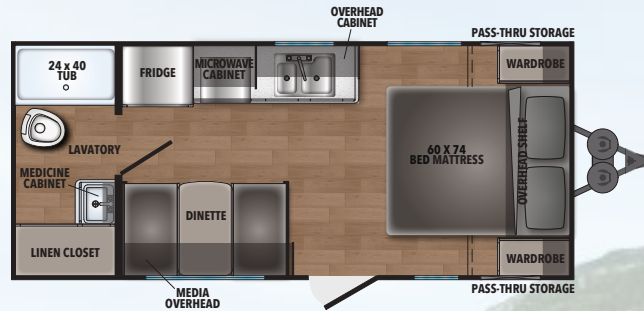
**16RE**

LENGTH 16'9" | HEIGHT 10'4" | UVW 2,964 | GVWR 4,000  
HITCH WEIGHT 302 | TANKS: FRESH 39, BLACK 30, GREY 30



**18BH**

LENGTH 23'1" | HEIGHT 10'6" | UVW 3,400 | GVWR 5,050  
HITCH WEIGHT 350 | TANKS: FRESH 39, BLACK 30, GREY 30



**18FQ**

LENGTH 23'1" | HEIGHT 10'6" | UVW 3,489 | GVWR 5,050  
HITCH WEIGHT 375 | TANKS: FRESH 39, BLACK 30, GREY 30

## STANDARDS FOR COMPACT SINGLE AXLE

### COMPACT PACKAGE INCLUDES

- Tankless Water Heater
- Black Tank Flush
- Microwave Oven
- 8K BTU A/C
- Seamless Countertops
- Solar & Back-up Camera Prep
- 4 Stabilizer Jacks
- 8 cu ft Residential Style Refer (4.5CUFT on 16BH and 16RE)
- Bluetooth Portable Speaker
- Battery Disconnect
- 20# LP Bottle
- Under-Mount Kitchen Sink
- Roadside Assistance

- Spare Tire
- Outside Shower

### EXTERIOR OPTIONS

- Aluminum Wheels
- 17" Griddle & Grill Combo
- Power Tongue Jack IPO Manual
- 200 Watt Solar/ 30 AMP Controller
- Solid Step (Standard on 16BH & 16RE)

### INTERIOR OPTIONS

- 8 cu ft Gas/Elec Refer (N/A on 16BH & 16RE)

### HEATING/COOLING OPTIONS

- 15K BTU A/C



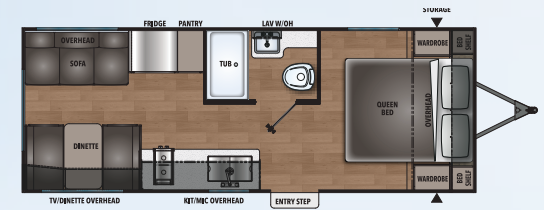
FOR MORE INFORMATION, PICTURES, AND 360 VIRTUAL TOURS VISIT SHASTARVING.COM



FOLLOW US

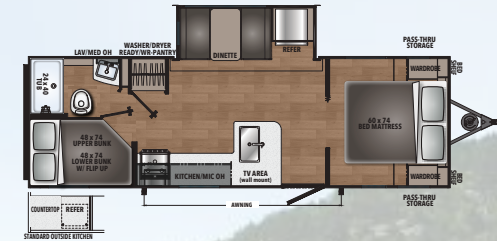


## i-5 FLOORPLANS



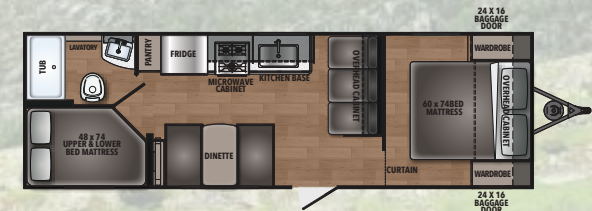
**521CK**

LENGTH 25'4" | HEIGHT 11'3" | UVW 4,263 | GVWR 7,455  
HITCH WEIGHT 501 | TANKS: FRESH 39, BLACK 30, GREY 30



**525BHS**

LENGTH 28'11" | HEIGHT 11'3" | UVW 5,165 | GVWR 7,549  
HITCH WEIGHT 549 | TANKS: FRESH 39, BLACK 30, GREY 30



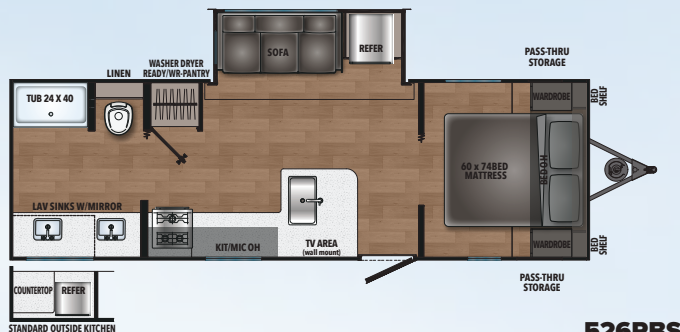
**526BH**

LENGTH 31'0" | HEIGHT 11'3" | UVW 5,198 | GVWR 7,580  
HITCH WEIGHT 662 | TANKS: FRESH 39, BLACK 30, GREY 30



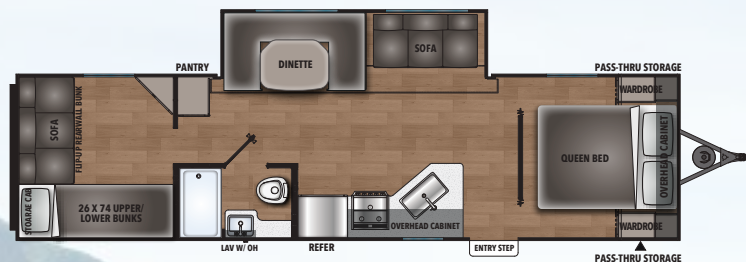
**526DB**

LENGTH 31'0" | HEIGHT 11'5" | UVW 5,300 | GVWR 7,716  
HITCH WEIGHT 662 | TANKS: FRESH 39, BLACK 30, GREY 30



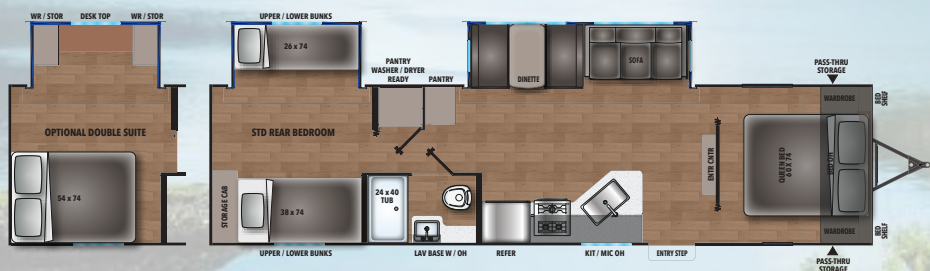
**526RBS**

LENGTH 28'11" | HEIGHT 11'3" | UVW 5,213 | GVWR 7,547  
 HITCH WEIGHT 647 | TANKS: FRESH 39, BLACK 30, GREY 30



**530QB**

LENGTH 36'1" | HEIGHT 11'5" | UVW 6,500 | GVWR 9,567  
 HITCH WEIGHT 767 | TANKS: FRESH 39, BLACK 30, GREY 30



**532BEDS**

LENGTH 36'1" | HEIGHT 11'3" | UVW 7,200 | GVWR 9,615  
 HITCH WEIGHT 915 | TANKS: FRESH 39, BLACK 30, GREY 30

**STANDARDS FOR i-5 EDITION**

**BASE CAMP PACKAGE INCLUDES**

- Tankless Water Heater
- Black Tank Flush
- Microwave Oven
- 13.5 A/C
- Seamless Countertops
- Bluetooth Portable Speaker
- Solar & Back-up Camera Prep
- Monitor Panel
- Battery Disconnect
- 4 Stabilizer Jacks
- 8 cu ft Residential Style Refer
- 20# LP Bottle
- Roadside Assistance
- Spare Tire
- Enclosed Underbelly
- Sink Covers

**EXTERIOR OPTIONS**

- 200 Watt Solar/ 30 AMP Controller
- Power Tongue Jack

**INTERIOR OPTIONS**

- Double Suite on 532BEDS
- 8 cu ft Gas/Elec Refer

**HEATING/COOLING OPTIONS**

- 15K BTU A/C IPO 13,500
- 50 AMP with 2nd Prep
- 2nd 13.5K A/C with 50AMP Service (26 and Larger)
- Three 13.5K A/C with 50AMP Service on 530QB and 532BEDS





## CUSTOMER SERVICE IS OUR #1 PRIORITY!



### PRE-DELIVERY INSPECTION

20,000 square feet of quality assurance. The bare essentials for a premium product. This state-of-the-art facility gives immediate daily feedback to production for quality assurance in every unit built.

**FREE MEMBERSHIP**  
to Forest River Owners' Group

[www.forestriverfrog.com](http://www.forestriverfrog.com)



## SHASTA HISTORY

- 1941** – Robert Gray built the first Shasta to be used as mobile military housing in California.
- 1951** – Shasta produced what would become the most popular travel trailer of the era, The Toaster on Wheels, featuring the iconic Shasta Wings.
- 1972** – W.R. Grace Company buys Shasta from Robert Gray. At this time, Shasta was the largest seller of RV's in the US.
- 1976** – Coachmen Industries buys Shasta RV from W.R. Grace.
- 2010** – Shasta re-emerged as a division of Forest River.
- 2015** – Shasta introduced the 1961 Airflyte re-issue campers.
- 2021** – Celebrating 80 Years of Excellence!



FOLLOW US



Learn More  
Scan this barcode using a QR Reader on your smart phone to learn more about Forest River.



### SHASTA OWNER "DIGITAL KIT" APP

Now you can have your Owner's Manual with you wherever you are. Download our FREE App from the App Store or Google Play and you'll have the information right at your fingertips.



YOUR SHASTA DEALER:

### 24/7 EMERGENCY ROADSIDE ASSISTANCE WITH VEHICLE PURCHASE\*

- |                |                 |
|----------------|-----------------|
| TOWING         | WINCH-OUT       |
| JUMP-STARTS    | MOBILE MECHANIC |
| TIRE CHANGES   | TECHNICAL       |
| FLUID DELIVERY | SUPPORT         |
| LOCKOUT        | DEALER LOCATOR  |
| SERVICE        | SERVICES        |



\*VALID FOR 1 YEAR FROM DATE OF PURCHASE

### CUSTOMER SATISFACTION



[www.ForestRiverBuyLocal.com](http://www.ForestRiverBuyLocal.com)

All information contained in this brochure is believed to be accurate at the time of publication. However, during the model year, it may be necessary to make revisions and Forest River, Inc., reserves the right to make all such changes without notice, including prices, colors, materials, equipment and specifications as well as the addition of new models and the discontinuance of models shown in this brochure. Therefore, please consult with your Forest River, Inc., dealer and confirm the existence of any materials, design or specifications that are material to your purchase decision.  
© Copyright 2024 Shasta, a Division of Forest River Inc – All Rights Reserved.

**Shasta Recreational Vehicles**  
105 14th Avenue • Middlebury, IN 46540 • (574) 825.7178  
[www.ShastaRVing.com](http://www.ShastaRVing.com)