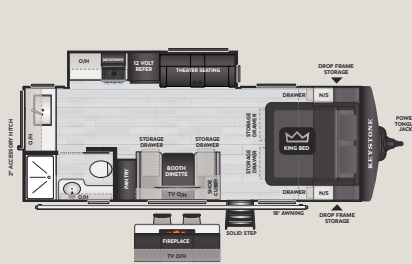
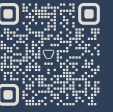


COUGAR

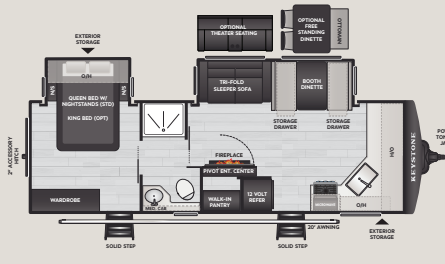
HALF-TON

TRAVEL TRAILERS

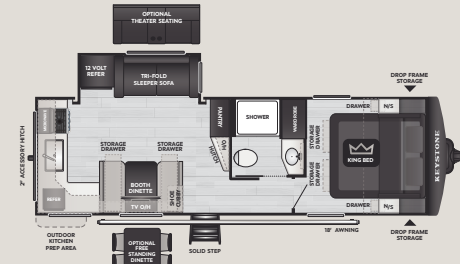
SCAN FOR MORE INFO



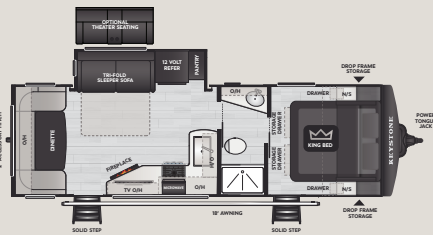
22MLS WEIGHT 6088 LENGTH 26'10"



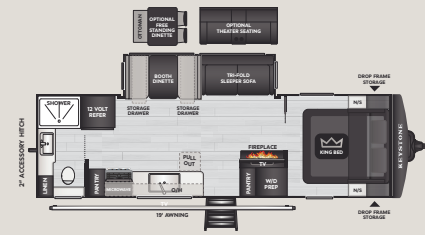
25FKD WEIGHT 7096 LENGTH 29'11"



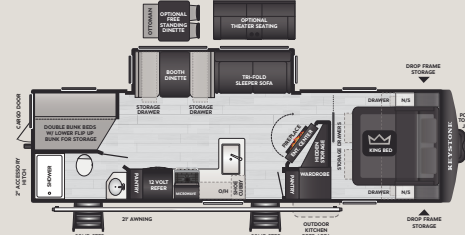
25MLE WEIGHT 6770 LENGTH 29'11"



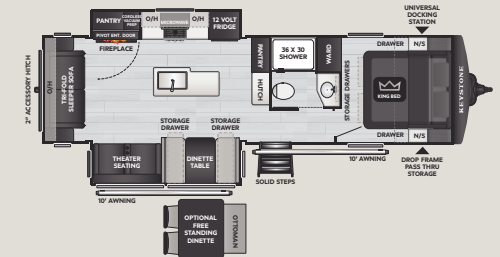
25RDS WEIGHT 6507 LENGTH 29'10"



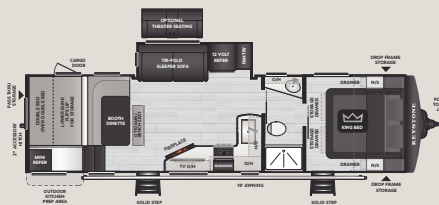
26LBW WEIGHT 7195 LENGTH 30'10"



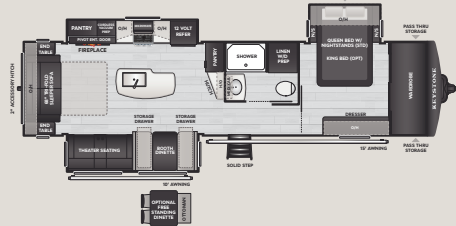
28BHS WEIGHT 7240 LENGTH 32'11"



29RLP WEIGHT 7875 LENGTH 33'7"



30BHS WEIGHT 7403 LENGTH 34'5"



33RLI WEIGHT 8705 LENGTH 37'5"



34TSB WEIGHT 8773 LENGTH 37'5"



DISCLAIMER: Product information is as accurate as possible as of the date of publication of this publication. All features, floor plans, and specifications in this publication are subject to change without notice. Please also consult Keystone's web site at www.keystonerv.com for more current product information and specifications. Tow Vehicle Disclaimer. CAUTION: Owners of Keystone recreational vehicles are solely responsible for the selection and proper use of tow vehicles. All customers should consult with a motor vehicle manufacturer or their dealer concerning the purchase and use of suitable tow vehicles for Keystone products. Keystone disclaims any liability or damages suffered as a result of the selection, operation, use or misuse of a tow vehicle. KEYSTONE'S LIMITED WARRANTY DOES NOT COVER DAMAGE TO THE RECREATIONAL VEHICLE OR THE TOW VEHICLE AS A RESULT OF THE SELECTION, OPERATION, USE OR MISUSE OF THE TOW VEHICLE. *Length is defined as the distance from the centerline of hitch/pin/coupler to rear bumper of trailer. ** Fresh water capacity includes water heater. Please review owner's manual prior to purchase for more information on service warranties, extended use, towing and maintenance. Owner's manuals can be found at keystonerv.com. PRINTED 12.2025.



STANDARD FEATURES & OPTIONS

PROFESSIONAL GRADE CAMPING PACKAGE

- ◆ 55 Gallon Fresh Water Tank
- ◆ Washer/Dryer Prep (ONLY 33RLI)
- ◆ Drop-Frame with Increased Storage (SELECT MODELS)
- ◆ Extra-Wide Entry Step with Composite Step Treads
- ◆ Entry Door Privacy Shade
- ◆ Vent-All Window System
- ◆ On-Demand Water Heater
- ◆ 5-Sided Aluminum Superstructure
- ◆ AlphaPly roof membrane with Limited Lifetime Warranty
- ◆ Fully Walkable Roof and Slideout Roof
- ◆ Dual 20lb LP Tanks
- ◆ LP Quick Disconnect for Grilling (ALL MODELS)
- ◆ Power Watchdog™ Safeview Smart RV Power Inlet: 30 or 50 AMP
- ◆ Dimmable Lights in Main Slide, Living Room & Bedroom
- ◆ High Definition Smart TV
- ◆ Dual Zone Bluetooth Audio System
- ◆ Winegard 360 Plus w/ WIFI Prep, Satellite Pass-through
- ◆ 12V Charging Stations Throughout
- ◆ Blackout Roller shades Throughout
- ◆ Linoleum Slideout Flooring
- ◆ Single Bowl Stainless Steel Kitchen Sink w/ Sink Covers
- ◆ High Rise Kitchen Faucet w/ Pullout Sprayer
- ◆ Furrion 17" Oven w/ 3 Burner Cooktop
- ◆ Universal Docking Station - Easy Winterization
- ◆ Power Tank Fill
- ◆ Exterior Awning Switch in Pass-Thru
- ◆ Water Pump Easy Access w/ Hinged Door (SELECT MODELS)
- ◆ Hardwood Cabinet Doors w/ Soft Close Hidden Hinges
- ◆ Key-Alike Lock System

- ◆ Under Bed Storage w/ Strut Assist
- ◆ Under Bed Drawers (SELECT MODELS)
- ◆ Nightstands w/ 110 Outlets and USB Ports
- ◆ Booth Dinette w/LED Lights and Drawers
- ◆ Slide Topper Prep
- ◆ Dedicated Shower Light
- ◆ Oxygenics® Shower Head/Hose

TOWING W/ CONFIDENCE PACKAGE WITH ABS

- ◆ Lippert Axles w/ Anti-Lock Braking System
- ◆ Bronze Bushings, Heavy Duty 1/2 Shackle Plate/Wet Bolts
- ◆ Goodyear Endurance Tires
- ◆ Tire Linc® TPMS Prep
- ◆ Full Size Spare Tire
- ◆ Curt Road Armor™ Shock Absorbing Equalizer
- ◆ Reverse Warning Lights in Taillight
- ◆ 2" Accessory Hitch (SELECT MODELS)
- ◆ Rear Observation Camera Prep

COUGAR INNOVATION PACKAGE

- ◆ HIGH GLOSS HyperCore® Composite Sidewalls
- ◆ Hyper-Deck Water Resistant Flooring
- ◆ Color Coded & Unified Wiring System
- ◆ Giggy Box-Industry's 1st Organized 12 volt Wiring Box, Patented
- ◆ KeyTV™ Multisource Signal Controller, Patented

- ◆ MY KEYSTONE Owners Mobile App
- ◆ Painted Front Cap w/ Automotive Clear Coat
- ◆ Tank Guardian High Tensile Strength Strap System
- ◆ Double Welded Aluminum Frame Construction
- ◆ Decorative Snap-In Ceiling & Crown Molding Treatments
- ◆ Power Converter with Auto-Detect Battery Recognition
- ◆ Automotive Windshield (SELECT MODELS)

CLIMATE GUARD PROTECTION PACKAGE

- ◆ 15k Furrion A/C, Ducted
- ◆ 30k BTU Furnace
- ◆ Tinted Windows
- ◆ Astro-Foil Insulated Underbelly
- ◆ 12Volt-Heat Pads on Holding Tanks
- ◆ Forced-Air Heated & Enclosed Underbelly
- ◆ Reflective Foil in Front Cap, Slide Floors
- ◆ Dual Attic Vents
- ◆ PEX Plumbing Lines
- ◆ Foil Backed, Foam Core A/C Duct with Tuf-Lok™ Joiners

OPTIONS

- ◆ Full Body Paint Packages Available: Hero Edition