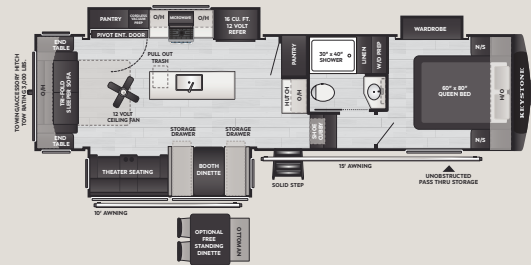


260MLE

WEIGHT 9674

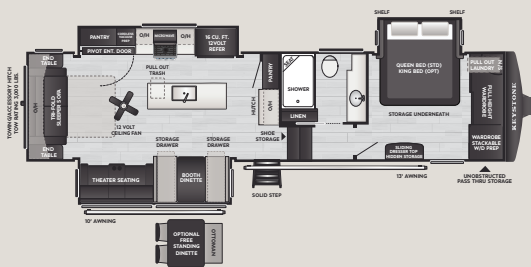
LENGTH 30' 11"



290RLS

WEIGHT 10567

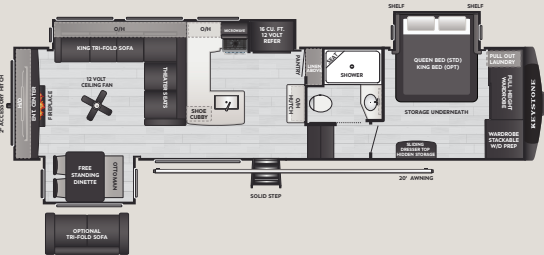
LENGTH 33' 8"



316RLS

WEIGHT 11050

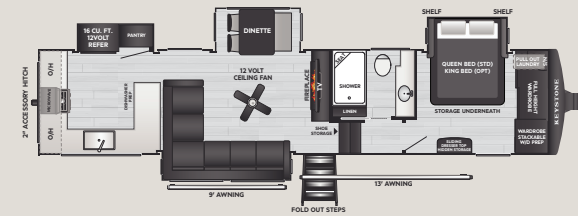
LENGTH 35' 8"



320RDS

WEIGHT 11133

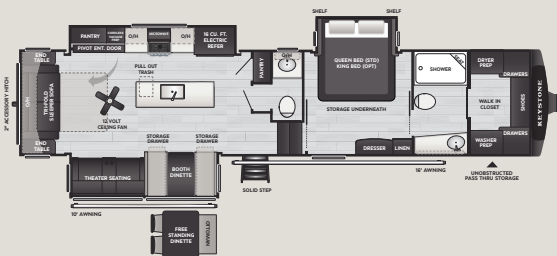
LENGTH 36' 10"



350LLK

WEIGHT 12040

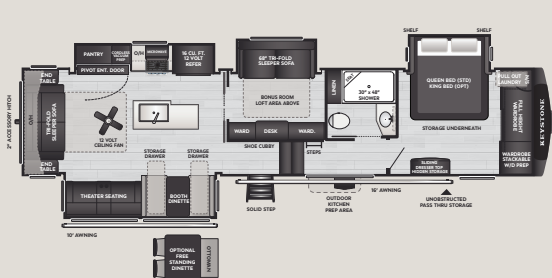
LENGTH 39' 3"



355FBS

WEIGHT 11740

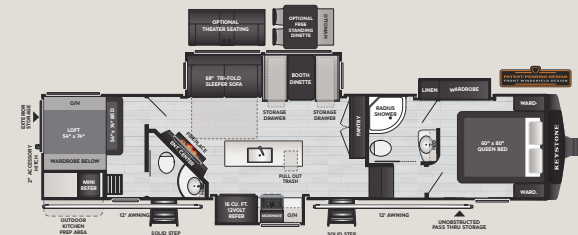
LENGTH 39' 3"



360MBI

WEIGHT 12325

LENGTH 39' 3"



364BHL

WEIGHT 11718

LENGTH 39' 0"



STANDARD FEATURES & OPTIONS

PROFESSIONAL GRADE CAMPING PACKAGE

- ◆ 75 Gallon Fresh Water Tank
- ◆ Washer/Dryer Prep (**SELECT MODELS**)
- ◆ Hidden Dresser Storage
- ◆ Extra-Wide Entry Step with Composite Step Treads
- ◆ Entry Door Privacy Shade
- ◆ Vent-All Window System
- ◆ On-Demand Water Heater
- ◆ 5-Sided Aluminum Superstructure
- ◆ AlphaPly roof membrane with Limited Lifetime Warranty
- ◆ Fully Walkable Roof and Slideout Roof
- ◆ Dual 30lb LP Tanks
- ◆ LP Quick Disconnect for Grilling (**ALL MODELS**)
- ◆ Power Watchdog™ Safeview Smart RV Power Inlet: 50 Amp
- ◆ Washable PVC Sewer Hose Storage
- ◆ Dimmable Lights in Main Slide, Living Room & Bedroom
- ◆ Heat & Massage Theater Seats (**SELECT MODELS**)
- ◆ 50" High Definition Smart TV
- ◆ Dual Zone Bluetooth Audio System
- ◆ Winegard 360 Plus w/ WIFI Prep, Satellite Pass-through
- ◆ 12V Charging Stations Throughout
- ◆ Power Vent w/ Rain Sensor in Kitchen
- ◆ 30" Residential Microwave Vents to Exterior
- ◆ Furrion 21" Oven w/ 3 Burner Cooktop & Oven Drawer
- ◆ Solid Surface Kitchen Countertops
- ◆ Pull-out Trash Cans (2) w/Paper Towel Holder (**SELECT MODELS**)
- ◆ Exterior Awning Switch in Pass-Thru
- ◆ Water Pump Easy Access w/ Hinged Door
- ◆ Hardwood Cabinet Doors w/ Soft Close Hidden Hinges
- ◆ Key-Alike Lock System
- ◆ Lighted Termination Points
- ◆ MORryde® Telescoping Safe-T-Rail Entry Handle
- ◆ Booth Dinette w/LED Lights and Drawers
- ◆ Slide Topper Prep
- ◆ Dedicated Shower Light
- ◆ Oxygenics® Shower Head and Hose
- ◆ LED Closet Rod Lighting (**SELECT MODELS**)

TOWING W/ CONFIDENCE PACKAGE WITH ABS

- ◆ MaxTurn™ Technology
- ◆ Lippert™ Axles w/ Anti-Lock Braking System
- ◆ Bronze Bushings, Heavy Duty 1/2 Shackle Plates & Wet Bolts
- ◆ Rainier H Rated 16 Ply Tires w/ 8 Year Warranty
- ◆ 16" 6 Lug Wheels
- ◆ Tire Linc® TPMS Prep
- ◆ H Rated Full Size Spare Tire
- ◆ Curt Helux™ Series Coil Spring Pin Box
- ◆ Curt Road Armor™ Shock Absorbing Equalizer
- ◆ Reverse Warning Lights in Taillight
- ◆ 2" Accessory Hitch (**SELECT MODELS**)
- ◆ 2" Towing Hitch with 4 Way Plug (**SELECT MODELS**)
- ◆ Rear Observation Camera Prep

COUGAR INNOVATION PACKAGE

- ◆ Water Management Center Providing Individual Shut-off Valves
- ◆ HIGH GLOSS HyperCore® Composite Sidewalls
- ◆ Color Coded & Unified Wiring System
- ◆ Giggy Box-Industry's 1st Organized 12 Volt Wiring Box, Patented
- ◆ KeyTV™ Multisource Signal Controller, Patented
- ◆ Spacesaver Fifth Wheel Chassis
- ◆ MY KEYSTONE Owners Mobile App
- ◆ Painted Front Cap w/ Automotive Clear Coat
- ◆ Automotive Windshield (**SELECT MODELS**)
- ◆ Tank Guardian High Tensile Strength Strap System
- ◆ Double Welded Aluminum Frame Construction
- ◆ Tuf-Lok™ Thermoplastic Air Conditioning Duct Joiners
- ◆ Decorative Snap-In Ceiling & Crown Molding Treatments
- ◆ Power Converter with Auto-Detect Battery Recognition

CLIMATE GUARD PROTECTION PACKAGE

- ◆ 18k Furrion High Efficiency Chill® Cube A/C
- ◆ 15k Ducted Bedroom A/C
- ◆ 3rd A/C Prep
- ◆ 30k BTU Furnace
- ◆ Tinted Windows
- ◆ Astro-Foil Insulated Underbelly
- ◆ 12Volt-Heat Pads on Holding Tanks
- ◆ Forced-Air Heated & Enclosed Underbelly
- ◆ Heated Basement Storage & Convenience Center
- ◆ Reflective Foil in Front Cap, Slide Floors
- ◆ 12V Ceiling Fan (**SELECT MODELS**)
- ◆ Dual Attic Vents
- ◆ PEX Plumbing Lines
- ◆ Insulated Gooseneck & Bulkhead Divider
- ◆ Sealed Pin Box
- ◆ Electric Fireplace
- ◆ Foil Backed, Foam Core A/C duct with Tuf-Lok™ Joiners

OPTIONS

- ◆ Full Body Paint Packages Available: Midnight Edition-Black Onyx or Phantom Gray, Hero Edition, 1776 Edition