

ALPINE

LUXURY FIFTH WHEEL



KEYSTONE
RV COMPANY

CAMP BETTER

MAKE A STATEMENT WITH FULL BODY PAINT

Upgrade your look with Keystone's exclusive fade-and peel-resistant automotive Champagne or Black Diamond paint options.



2023 ALPINE | EXCEPTIONAL FEATURES

- 100" WIDE BODY CONSTRUCTION
- DRAMATIC HIGH CEILINGS
- 6' 10" TALL SUMMIT SLIDES W/ OVERSIZED WINDOWS
- PANORAMIC FRAMELESS WINDOWS THROUGHOUT
- DROP-FRAME CHASSIS
- ROAD ARMOR™ SUSPENSION W/ 1/2" SHACKLE PLATES
- HITCH VISION™ TECHNOLOGY IN FULLY PAINTED, MOLDED FRONT CAP
- HIGH GLOSS EXTERIOR SIDEWALLS
- EXCLUSIVE FOUR-SEASON RV POLAR PACK™ CLIMATE PROTECTION
- LAMINATED, DOUBLE-INSULATED REAR WALL
- THERMASHIELD 37 INSULATION
- DUAL 15,000 BTU A/CS W/ WHISPER QUIET TECHNOLOGY
- BLADE PURE™ HIGH PERFORMANCE AIR FLOW SYSTEM W/ MERV 9 FILTRATION
- IN-COMMAND® GENERATION 3 W/GLOBAL CONNECT SMART RV CONTROL SYSTEM
- **NEW GIRARD ON-DEMAND WATER HEATER**
- 40,000 BTU GAS FURNACE + 16,500 BTU ELECTRIC HEAT PUMP
- ATTIC VENTS IN ALL MODELS
- HARDWOOD CABINET DOORS, DRAWERS, AND STILES
- LG SOLID SURFACE COUNTERS
- INSIGNIA® RANGE W/ 3.73 CU. FT. OVEN & 30" CONVECTION MICROWAVE
- 18 CU. FT. RESIDENTIAL OR GAS/ELECTRIC REFRIGERATOR
- STACKABLE WASHER/DRYER PREP
- BACK-UP AND SIDE CAMERA PREP
- LARGE, INSULATED SLAM-LATCH BAGGAGE DOORS
- 12V ELECTRIC POWER CORD REEL
- SOLARFLEX™ 400i AND SOLARFLEX™ 600i-L SOLAR POWER PACKAGES W/ OPTIONAL DRAGONFLY ENERGY LITHIUM-ION BATTERIES



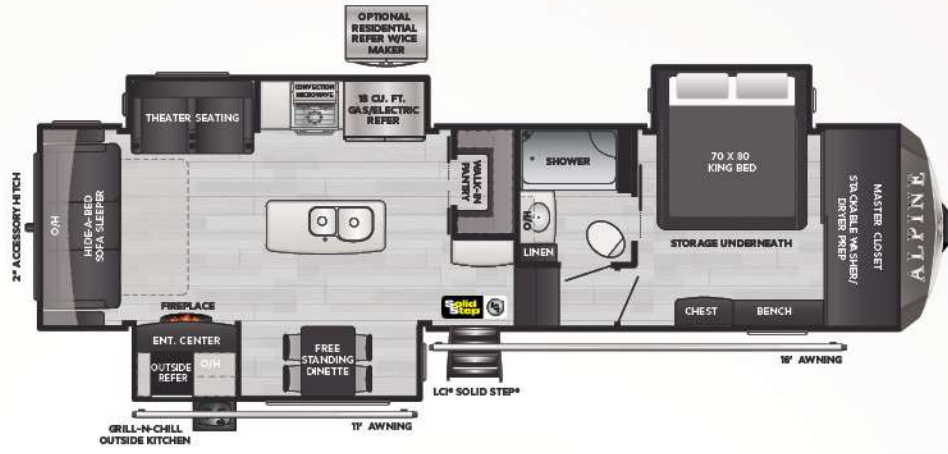
"We choose this fifth wheel for many reasons such as the unique floor plan layout. This unit has all the amenities that you would find in a residential home. The master bedroom and bathroom turn into a master suite. The versatility of having the built in solar system gives more opportunities for boondocking or off-grid RVing. We love the kitchen; having all residential appliances makes cooking meals much easier while traveling. This is our 4th Keystone RV and we could not be any happier!"



@THATTRAVELINGWIFE — ALPINE 3910RK OWNERS

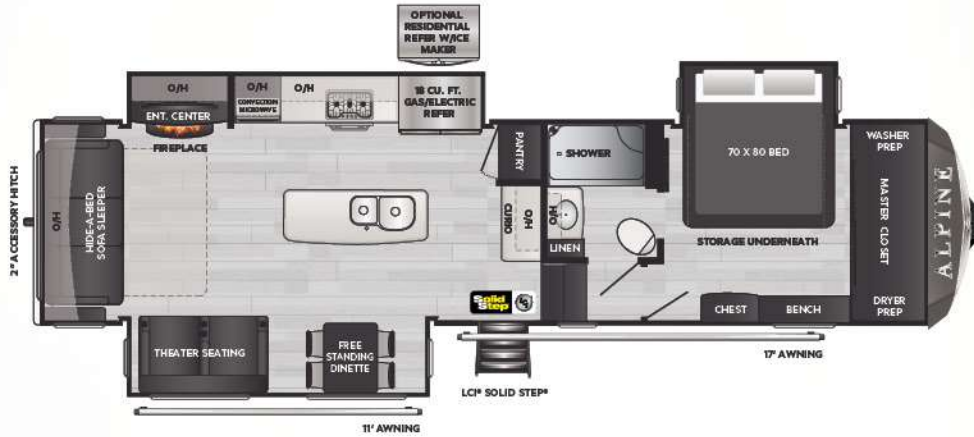
VISIT OUR WEBSITE FOR PHOTOS,
360° TOURS, AND FULL PRODUCT DETAILS





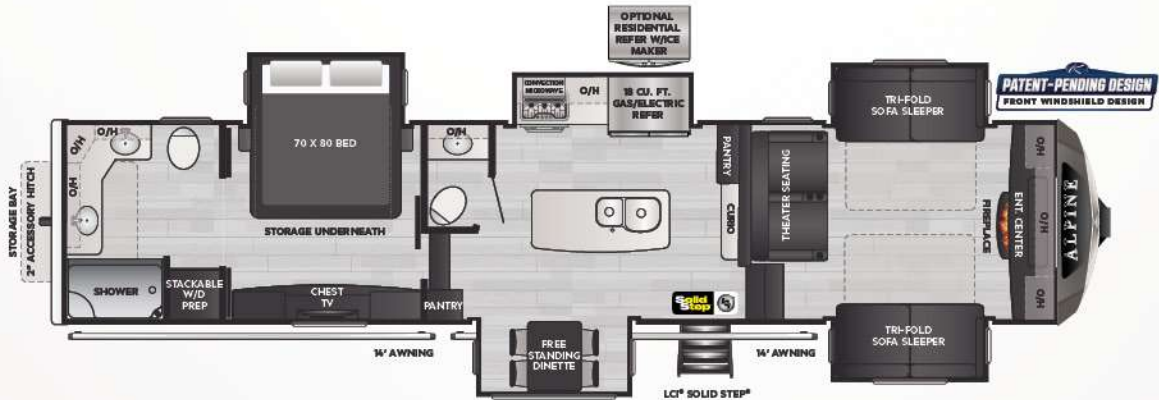
NEW! 3102RL WEIGHT 12510 LENGTH 35' 9"

▪ REAR LIVING, BUTLER PANTRY, MASTER SUITE W/ EXTERIOR KITCHEN



3220RL WEIGHT 12682 LENGTH 36' 9"

▪ REAR LIVING, MID-KITCHEN, MASTER CLOSET



3700FL WEIGHT 14168 LENGTH 47' 5"

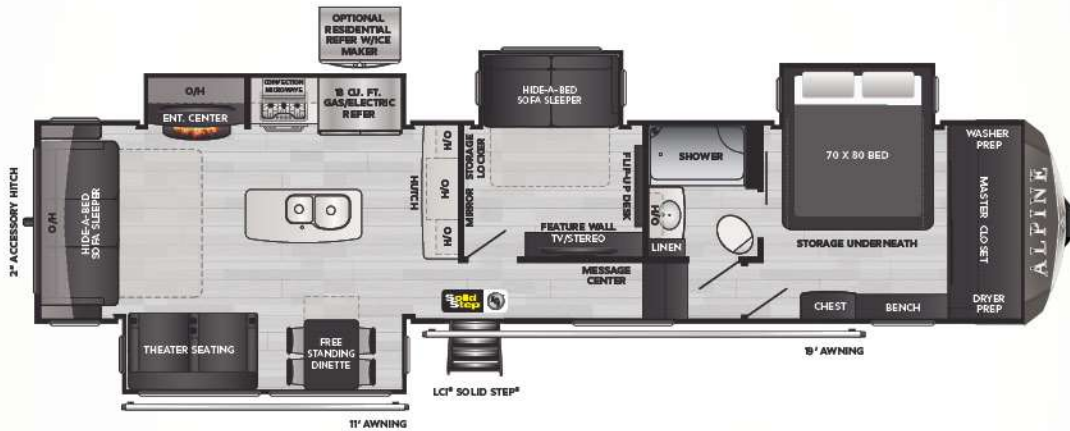
▪ 1-1/2 BATH, FRONT LIVING ROOM, MASTER SUITE, WINDSHIELD

SWAYBAR FLOORPLANS



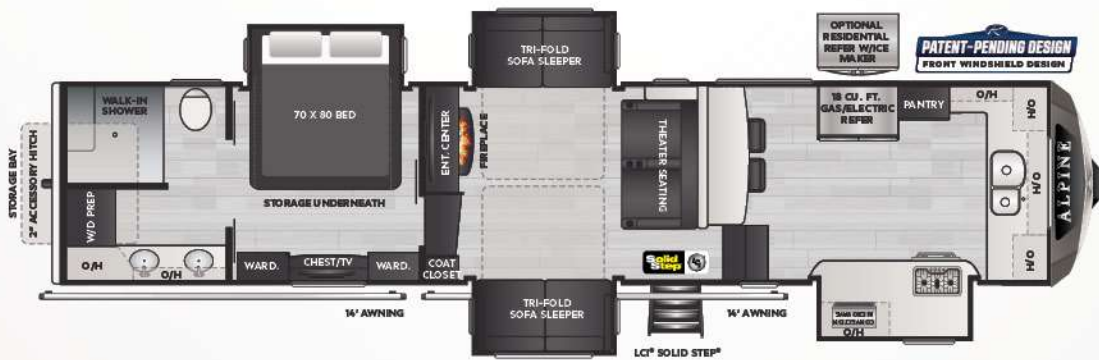
3712KB | WEIGHT 14259 | LENGTH 41' 5"

▪ FRONT LIVING, WALK-IN PANTRY AND SHOWER, WINDSHIELD



3720MD | WEIGHT 13951 | LENGTH 41' 5"

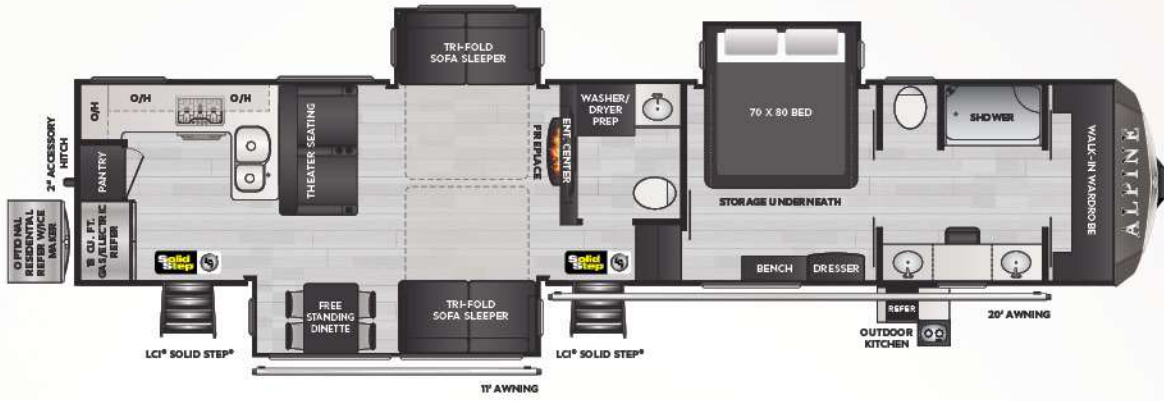
▪ MID-DEN W/ DESK



3790FK | WEIGHT 13691 | LENGTH 41' 5"

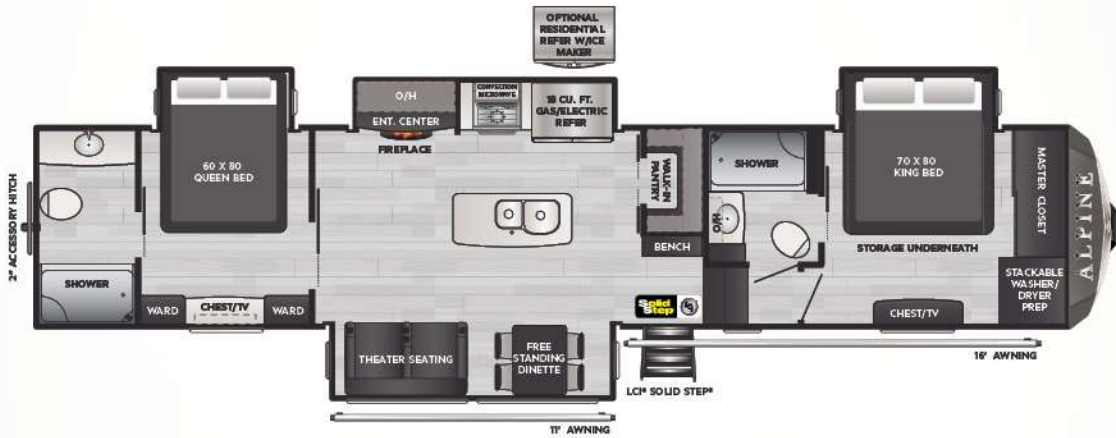
▪ FRONT KITCHEN, FOUR SLIDES, MASTER SUITE

SNOWBROOK



3910RK | WEIGHT 13876 | LENGTH 42' 11"

▪ REAR KITCHEN, 1-1/2 BATH, FRONT BATH, MASTER SUITE



NEW! 3912DS | WEIGHT 14605 | LENGTH 43' 2"

▪ TWO BEDROOM, TWO BATH, GRAND KITCHEN, MASTER SUITE

MODEL	WEIGHT	CARRYING CAPACITY	HITCH WEIGHT	FRESH WATER**	WASTE WATER	GRAY WATER	LPG	LENGTH*	WIDTH	HEIGHT	AWNING
3102RL	12510	2490	2475	54	49	83	60	35' 9"	8' 4"	13' 4"	16'/11'
3220RL	12682	2818	2470	54	49	83	60	36' 9"	8' 4"	13' 4"	17'/11'
3700FL	14168	2332	2775	54	78	78	60	41' 5"	8' 4"	13' 4"	14'/14'
3712KB	14259	2241	2810	54	44	78	60	41' 5"	8' 4"	13' 4"	14'/14'
3720MD	13951	2549	2860	54	49	83	60	41' 5"	8' 4"	13' 4"	11'/17'
3790FK	13691	2809	2620	54	44	88	60	41' 5"	8' 4"	13' 4"	14'/14'
3910RK	13876	2624	2780	54	83	83	60	42' 11"	8' 4"	13' 4"	20'/11'
3912DS	14605	1895	3025	54	98	132	60	43' 2"	8' 4"	13' 4"	16'/11'

ALPINE FLOORPLANS



TAKE CHARGE OF HOW YOU CAMP

EXCEPTIONAL QUALITY, IMPOSSIBLY VERSATILE, SolarFlex™ IS SHATTERING CUSTOMER'S EXPECTATIONS OF FACTORY-INSTALLED SOLAR POWER. EXCLUSIVELY AVAILABLE ON ALL KEYSTONE RV MODELS.



Relieve battery anxiety with legendary Lithium-ion deep cycle batteries – the ultimate replacement for lead acid. Lightweight, reliable, and longer-lasting, Dragonfly Energy batteries are made in the USA and available exclusively from Keystone RV and authorized dealers.

MY KEYSTONE OWNER'S APP

THE ONLY APP YOU'LL NEED...

» MANUALS & QUICK START GUIDES

» HOW-TO VIDEOS



» FIRST-TIME CAMPER'S ADVICE

» ACCESS TO YOUR RV'S MOBILE APPS

Available for iOS and Android devices.



FOLLOW US FOR THE LATEST!



DISCLAIMER: Product information is as accurate as possible as of the date of publication of this brochure. All features, floor plans, and specifications in this brochure are subject to change without notice. Please also consult Keystone's web site at www.keystonerv.com for more current product information and specifications. Tow Vehicle Disclaimer. CAUTION: Owners of Keystone recreational vehicles are solely responsible for the selection and proper use of tow vehicles. All customers should consult with a motor vehicle manufacturer or their dealer concerning the purchase and use of suitable tow vehicles for Keystone products. Keystone disclaims any liability or damages suffered as a result of the selection, operation, use or misuse of a tow vehicle. KEYSTONE'S LIMITED WARRANTY DOES NOT COVER DAMAGE TO THE RECREATIONAL VEHICLE OR THE TOW VEHICLE AS A RESULT OF THE SELECTION, OPERATION, USE OR MISUSE OF THE TOW VEHICLE. *Length is defined as the distance from the centerline of hitch pin/coupler to rear bumper of trailer. ** Fresh water capacity includes water heater. Please review owner's manual prior to purchase for more information on service warranties, extended use, towing and maintenance. Owner's manuals can be found at keystonerv.com.